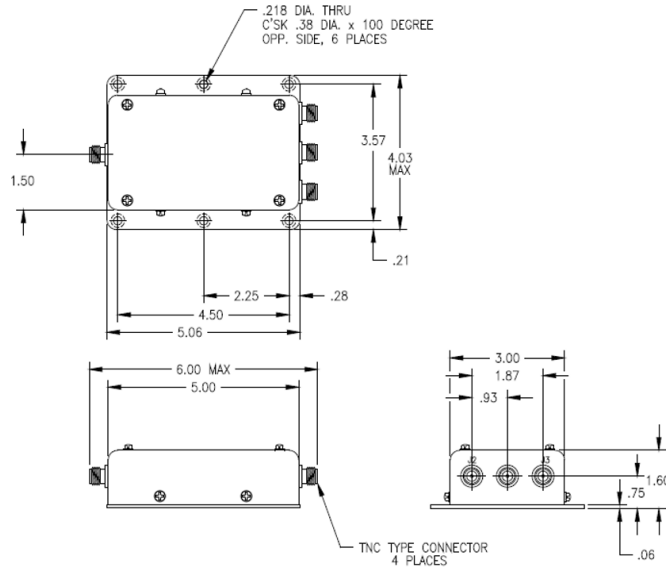


CU20-70-()

VHF/UHF Triplexer



Excellence in Aerospace since 1943



Specifications

Electrical

Frequency	See Chart
VSWR	1.5:1
Impedance	50 Ohms
Power	50 Watts
Insertion Loss	0.8 dB
Isolation	>30 dB

Mechanical

Weight	0.75 lb. max. (0.34 kg)
Height	1.60 in (40.6 mm)
Material	Aluminum
Finish	Flat Black
Connector	TNC (Female)

Federal Specifications

Approvals	None
-----------	------

CU20-70-() VHF/UHF Triplexer

The CU20-70 is a VHF/UHF triplexer and has an output for each of the following bands: 30 to 88 MHz, 116 to 152 MHz, and 225 to 400 MHz.

Applications

Triplexer designed to interface with either: one multi-band antenna to three transceivers, or one multi-band transceiver to three antennas.

Series

DG PN	Frequency	Number of Mounting Holes	Finish
CU20-70	30-88 MHz	6	Flat Black
	116-152 MHz		
	225-400 MHz		
CU20-70-1	30-88 MHz	6	Flat Black
	108-174 MHz		
	225-400 MHz		