

LEAD-THRU INSULATORS

PN 25ARM300-20B, 25ARM300-20E-(*), 25ARM300-20-(*)



Excellence in Aerospace since 1943

25ARM300-20E-10



25ARM300-20E-20



25ARM300-20E-30



25ARM300-20E-55



25ARM300-20E-90



25ARM300-20B

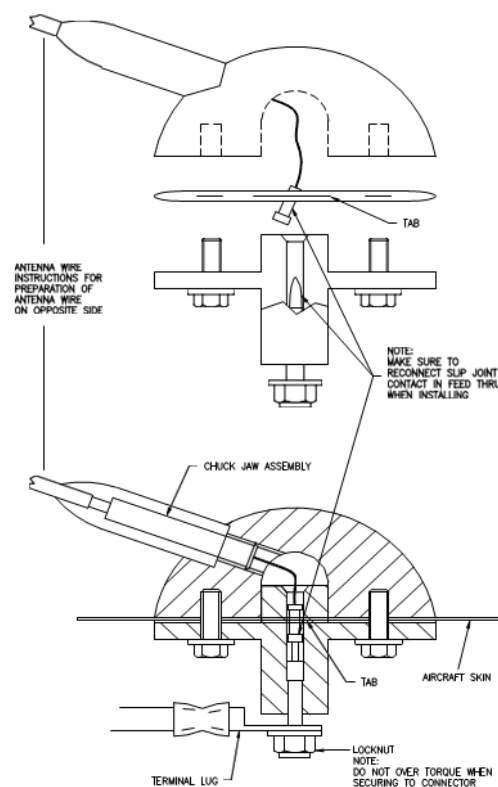


LEAD-THRU INSULATORS PN 25ARM300-20b, 25ARM300-20E-(*), 25ARM300-20-(*)

The lead-thru insulators with "E" in the part number come complete with solder lugs for inserting a shunt capacitor across the lead-thru to ground as required with some ADF antennas. They also have chuck jaws in the cap for securing the antenna wire.

Lead-thru insulators without the letters "E", "A", or "D" in the part number have a feed thru hole to feed the antenna wire through the cap and stud into the aircraft where the antenna wire is wrapped around the stud and secured.

25ARM300-20B May be drilled from any point on outer surface.



25ARM300-20-(*)

*=90°,55°,30°,20°,10° degree angles.

Nominal Weight: 2.1 oz.